

REGIONAL ANAESTHESIA

Peripheral blocks



echoplex+
A light in the dark



Value Life

● Ultrasound has revolutionised regional anesthesia.

This provides both clinicians and equipment manufacturers with new challenges:

Nerve stimulation needles need to be conductive to elicit a motor response, fine for easy insertion and smooth to minimize patient discomfort.

With ultrasound, the needle must reflect the sound back to the probe for good image reconstruction. An echogenic needle traditionally has an uneven surface and a larger diameter than a standard nerve stimulation needle.

●▶ **echoplex+** combines the requirement of both techniques:

A nerve stimulation needle has been made fully echogenic thanks to a new insulating coating developed by Vygon. The needle is fine, the outer surface is smooth and the echogenic coating goes right to the tip.

A new bevel combines easy skin penetration and echogenicity.



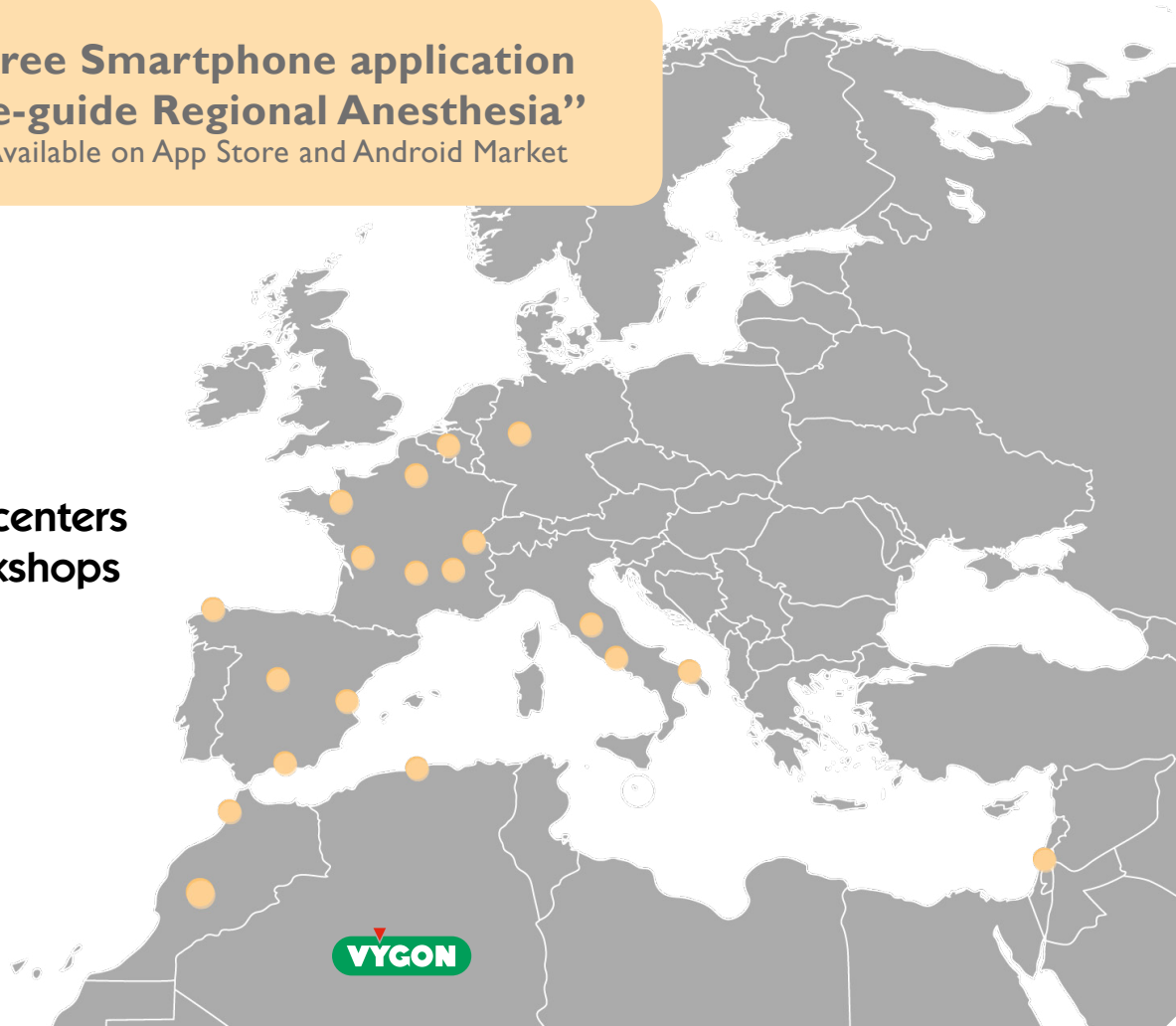
● Vygon: Your partner for new techniques

- To help you with training and development using ultrasound techniques, we offer all ancillary items required to perform blocks under ultrasound: designed probe covers and versatile drapes, probe supporting arms.
- We also support doctors through our multiple international training centers and an iPhone application.



Free Smartphone application
“e-guide Regional Anesthesia”
Available on App Store and Android Market

● **Training centers and workshops**



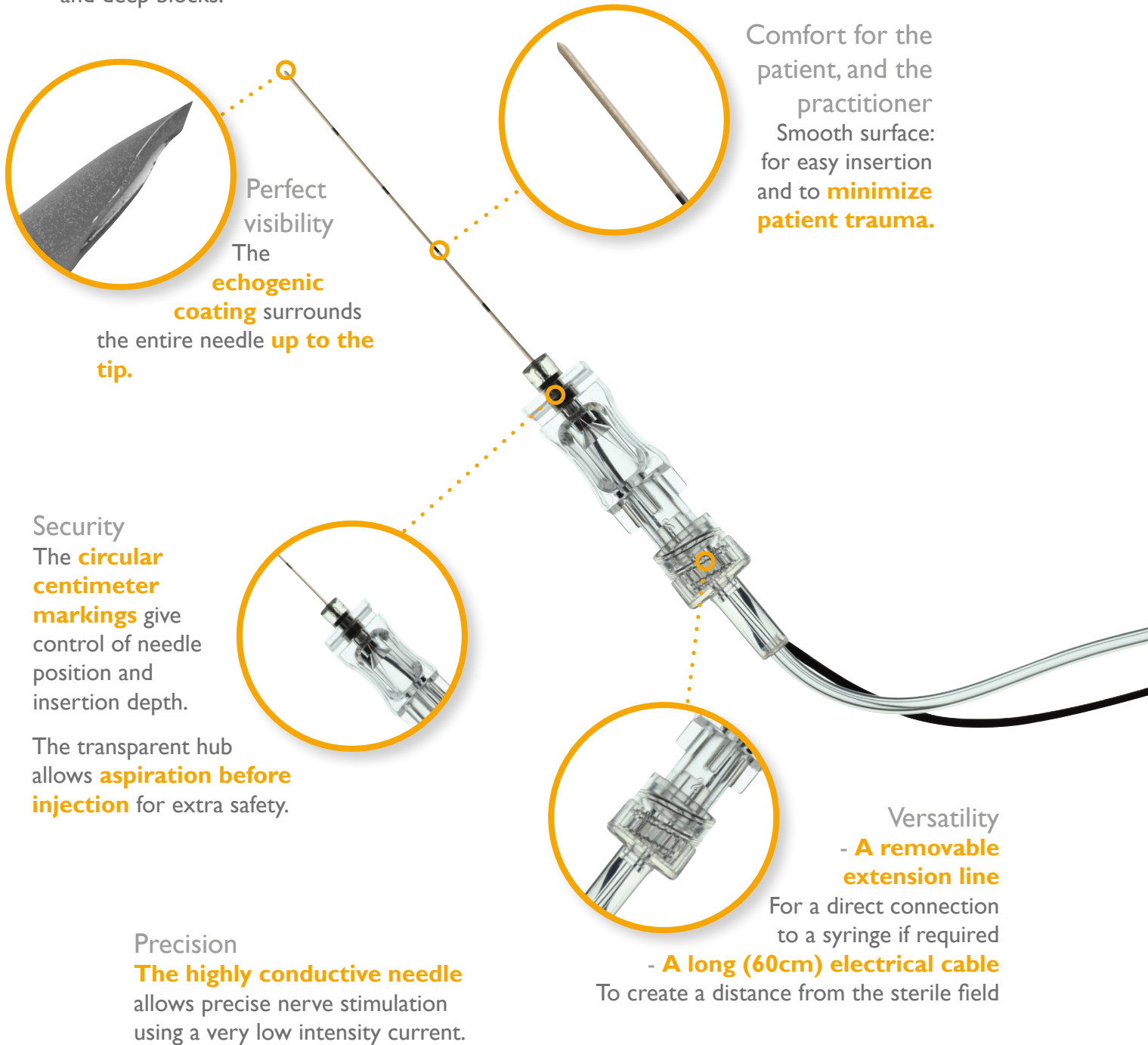
● Echogenic, non traumatic, easy to use...

The new bevel combines easy skin penetration and echogenicity.

Tuohy and long bevels are more echogenic thanks to their larger reflection surface. Short bevels allow a better control of the needle insertion. We developed a new 20° back cut covered bevel to combine both echogenicity and insertion control.

As a practitioner wrote: “**I appreciate using echoplex+ because it combines soft skin penetration and optimal needle course control due to its echogenicity**”.

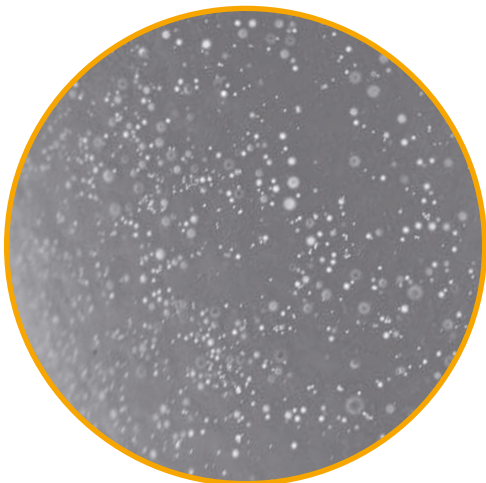
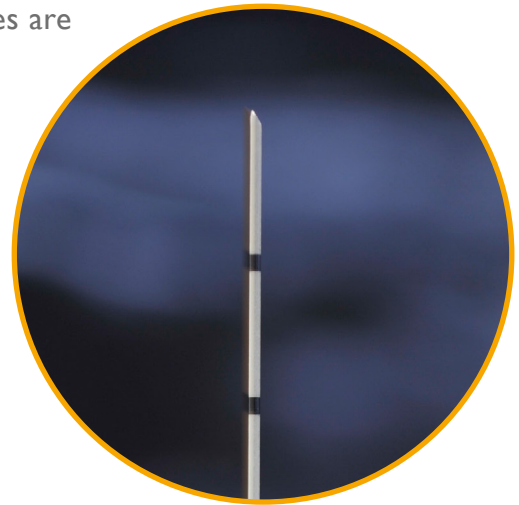
Thanks to its **reinforced rigidity**, practitioners control the course of the needle, in superficial and deep blocks.



Innovation: the echoplex+ coating

Ultrasound uses sound reflection to build a picture. Harder materials reflect the sound more strongly, so hard bones are more visible than soft tissue.

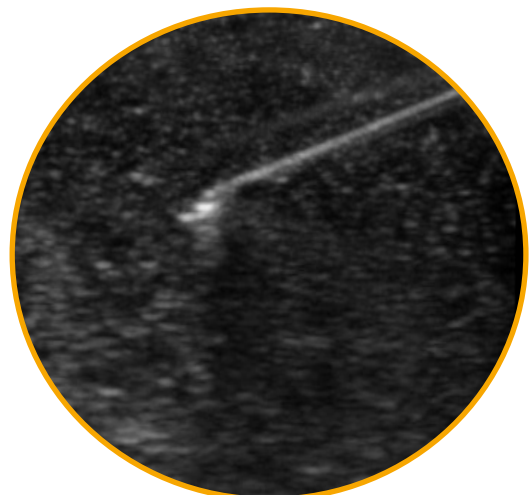
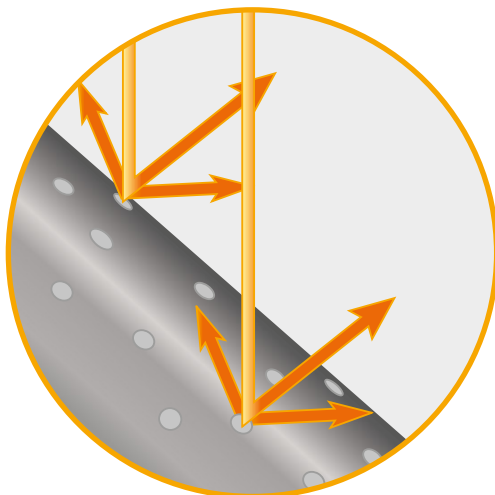
The echoplex+ coating uses the hardness of microscopic glass beads which are distributed in an insulating polymer.



• Echogenicity:

The high concentration of glass beads intensifies the ultrasound reflection. The quantity of glass beads has been precisely calculated to maximize reflection whilst minimizing artefacts. This makes echoplex+ clearly visible during insertion without obscuring the surrounding anatomy.

The needle body is echogenic right to the tip, and **visible with in plane and out of plane approaches.**

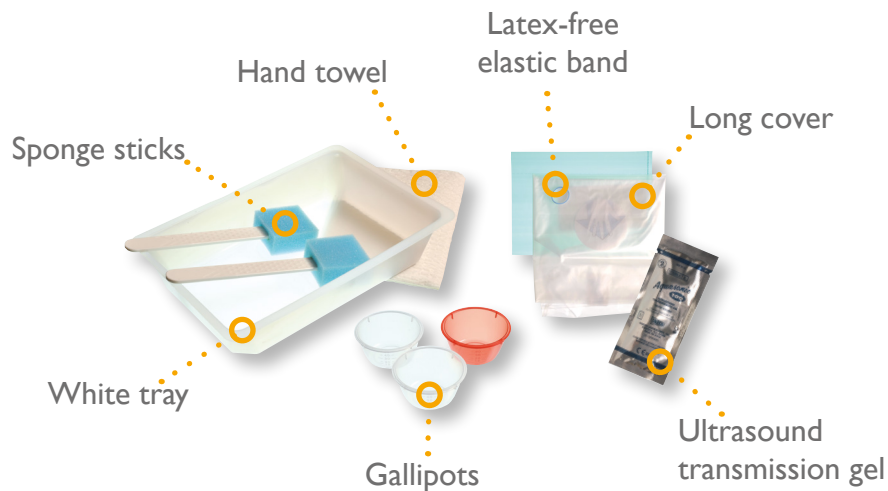


Standard sets

Sets for single-shot injections



Sets for continuous infusions



Custom packs

“Custom packs” meet your specific requirement. According to your needs, they can include:

Our echogenic and stimulating catheter:

silverstim

Transparent peelable drapes for ultrasound procedures



Adjustable drape
2 fenestrations:
13 x 18 cm
7 x 12 cm



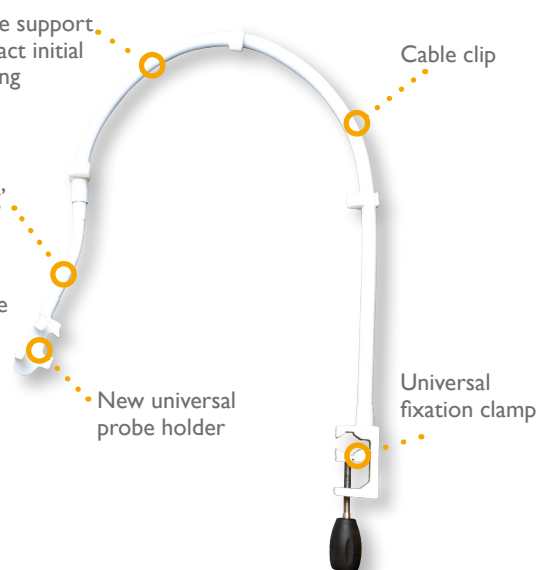
Transparent drape with a
large fenestration:
13 x 18 cm

echosupport

Supporting arm for ultrasound probes

The first flexible support arm enables exact initial probe positioning

The second, for ‘fine tuning’ ensures that the clinical area remains right under the probe tip.



To order

| echoplex+ | | |
|-----------|---------------|-------|
| Code | Needle length | Gauge |
| 6194.253 | 25 mm | 23 |
| 6194.353 | 35 mm | 23 |
| 6194.503 | 50 mm | 22 |
| 6194.853 | 85 mm | 21 |
| 6194.103 | 100 mm | 21 |
| 6194.123 | 120 mm | 20 |
| 6194.153 | 150 mm | 20 |

| Equipment for ultrasound | |
|--------------------------|-------------------------------|
| Code | Product |
| 96.93.2761 | Set for single-shot injection |
| 96.93.2762 | Set for continuous injection |
| 7507.515 | Universal echosupport |

For further information, please contact: questions@vygon.com

The specifications shown in this leaflet are for information only and are not, under any circumstances, of a contractual nature.

Vygon – 5, rue Adeline • 95440 ECOUEN • FRANCE
Reception: +33 (0)1.39.92.63.63 – Service clients France: +33 (0)1.39.92.63.81
Export customer service: +33 (0)1.39.92.64.15
Fax.: +33 (0)1.39.92.64.44 • www.vygon.com


www.vygon.com